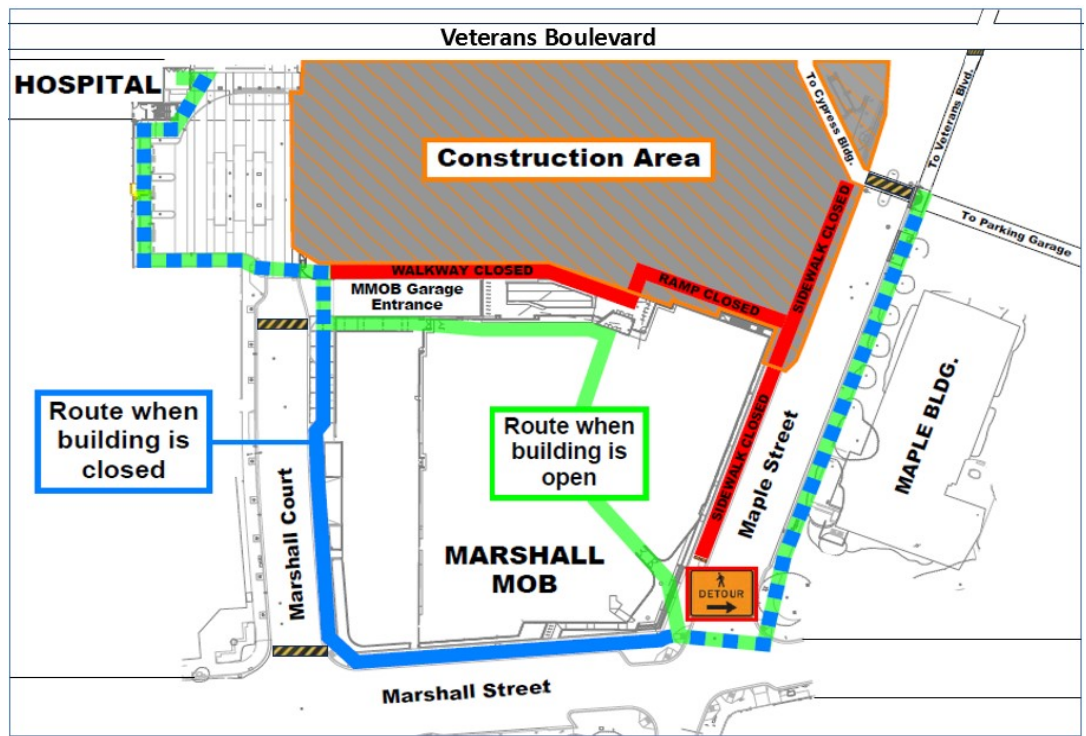


PEDESTRIAN DETOUR

See the **red zone** where the path is blocked on the map.

For your safety, please walk more slowly and be aware of uneven surfaces.



The outside walkway and ramp by the Marshall Medical Offices to reach Maple Street are closed starting Monday, Oct. 16.

We apologize for the inconvenience. **The alternate routes of travel for all pedestrians:**

- **Daytime hours:** walk inside the Marshall Medical Offices at Maple and Marshall Streets (**green path**) and then outside on the Maple Street sidewalk. All entrances to the Marshall Medical Offices are open/accessible Monday – Friday from 6 am to 9:30 pm. On Saturday/Sunday, only the Thrive Drive entrance is open from 6 am to 6 pm. Pedestrians can walk through the building to walk across our campus.
- **After hours, when the building is closed:** the route is *outside* the Marshall Medical Offices on the sidewalks (**blue path**) on Marshall Court, Marshall Street, and Maple Street. The Marshall Medical Offices are closed overnight Monday – Friday from 9:30 pm to 5 am and Saturday/Sunday from 6 pm to 7 am.
- **Security can provide rides or a walking escort.** Please call our Security Office 24/7 at 650-299-3139 (no tipping accepted).