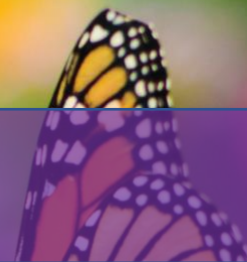


Breast Cancer Care Resources Greater Southern Alameda Area (GSAA)



We're Here to Help

Breast Care Coordinator	Elaine Lo, MPH	(510) 454-2727
Breast Surgery	San Leandro: Leah Candell, MD Fremont: Joanna Lee, MD	(510) 454-7100 (510) 248-3075
Plastic Surgery / Reconstruction	San Leandro: (510) 454-7100 Fremont: (510) 248-3075 Brady Sieber, MD; Leila Jazayeri, MD; Christine Lee, MD	
Surgery scheduler		(510) 454-7056
Admitting	San Leandro Fremont	(510) 454-7215 (510) 248-7066
Medical assessment prior to surgery (Peri-operative Medicine)	San Leandro Fremont	(510) 454-7600 (510) 248-5399
Radiology / imaging	Appointment Line (Mammogram, CT, PET, Bone Density, Bone Scan) San Leandro Screening Mammogram Front Desk Fremont Screening Mammogram Front Desk Union City Screening Mammogram and Diagnostic Breast Imaging Front Desk	(510) 454-4645 (510) 454-6290 (510) 248-3978 (510) 675-3310
Laboratory testing	San Leandro Fremont Union City Hayward Sleepy-Hollow	(510) 454-4250 (510) 248-3139 (510) 675-2170 (510) 454-4250
Medical Oncology	San Leandro: Fremont: Huichung Ling, MD; Amit Arora, MD Nurse Navigators Oncotype Dx information	(510) 454-2760 (510) 248-3274 510-454-2752 www.oncotypedxbreast.com/patient
Radiation Oncology	Oakland Dublin	510-752-4000 925-556-5800
Survivorship Clinic	San Leandro Fremont	(510) 454-2760 (510) 248-3274
Cancer Genetics	Oakland	(510) 752-6298, kp.org/ncal/cancer-genetics
Fertility Clinic	Fremont	(510) 248-6900, www.kpivf.com
Physical Therapy / Lymphedema Care	Union City Fremont	(510) 675-4289 (510) 248-3200
Clinical Trials		(510) 454-2724
Port Placement (interventional radiology)	San Leandro Fremont	(510) 454-4711 (510) 248-5789
Advance Health Care Directive	Fremont/San Leandro Union City	510-248-3339, kp.org/lifecareplan 510-675-3366
Release of Medical Information	healthy.kaiserpermanente.org/northern-california/support/medical-requests	(510) 675-6700, GSAAROI-Dept@kp.org kp.org/requestrecords
Prosthesis and Bras	Durable Medical Equipment	(877) 317-6231

Breast Cancer Care Resources Greater Southern Alameda Area (GSAA)



Social work	San Leandro Fremont	510-454-4930 510-248-7040
Health Education	San Leandro Fremont Union City	510-454-4531 510-248-3455 510-675-4531
Insurance/Coverage Concerns	Member Services	(800) 464-4000 healthy.kaiserpermanente.org/northern-california/support
Co-pay Concerns	Medical Financial Assistance Program	1-800-390-3507, www.kp.org/mfa/nca
Dental Care	Your dentist _____	
Primary Care	Your doctor _____	Advice/appointment line: 1-866-454-8855
Wellness / integrative health	healthy.kaiserpermanente.org/northern-california/health-wellness/classes-programs	
Appointment and Advice Call Center (24/7)		1-866-454-8855

If you think you have a medical or psychiatric emergency, call 911 or go to the nearest hospital.

If you're trying to reach your clinician, send them a secure email message through the My Doctor Online app on your smartphone or kp.org. If you're not yet registered, go to kp.org/register to create an account.